



BAZ

TECHNICAL RIDER

SCHEDULE

Day or night (to be defined with the organizer).

DURATION

Duration varies from 40 min to 1h30

TOURING TEAM

8 musicians & a technician

RECEPTION

Please provide lockable dressing rooms or a large dressing room with mirrors, toilets, shower, etc. and a 230V electrical outlet near the stage.

FOOD

Please provide a hot, balanced meal per person and a small catering service in the dressing rooms. (healthy snacks, fruits, honey, cold drinks: water, sodas, fruit juice, beers). A bottle of old rum would be appreciated. Please plan one meal without seafood.

SCENE

Plan a space of 35m² (7*5 meters) minimum.

We have a backdrop set up.

INSTRUMENTS

*Sousaphone

*Guitar

*Snare Drum (+HH+Cymbals)

*Bass Drum (+cymbal+tom)

*Baritone saxophone

*Alto saxophone

*Trombone

*Trumpet

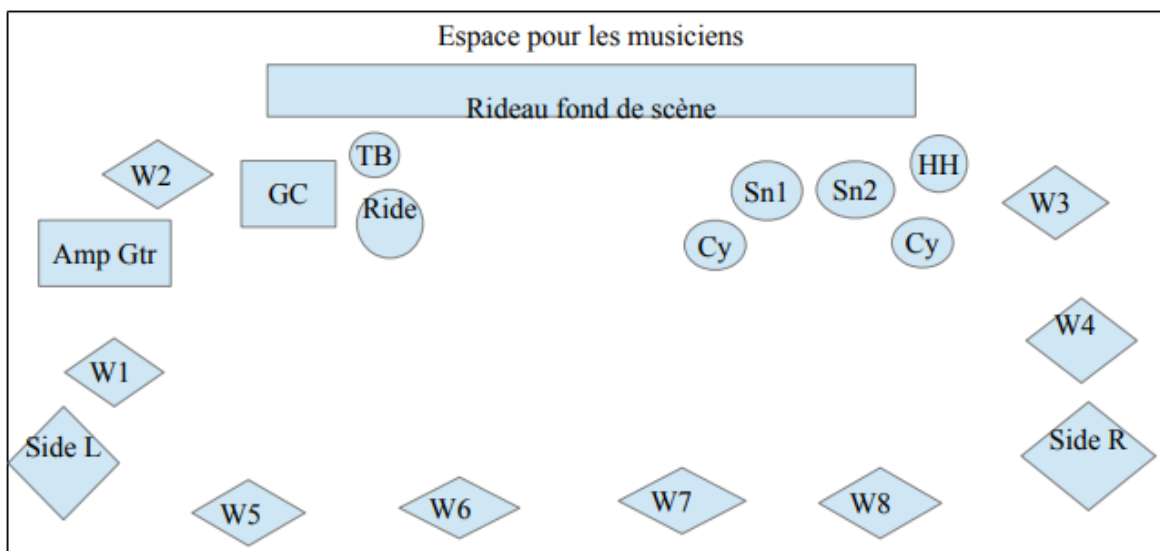
SOUND DATA SHEET

A real console, 2 reverbs (pcm,spx) and 1 delay. Enough to compress and gate the slices and 1 comp stereo on 1 sub stereo group.

Monitors and stage :

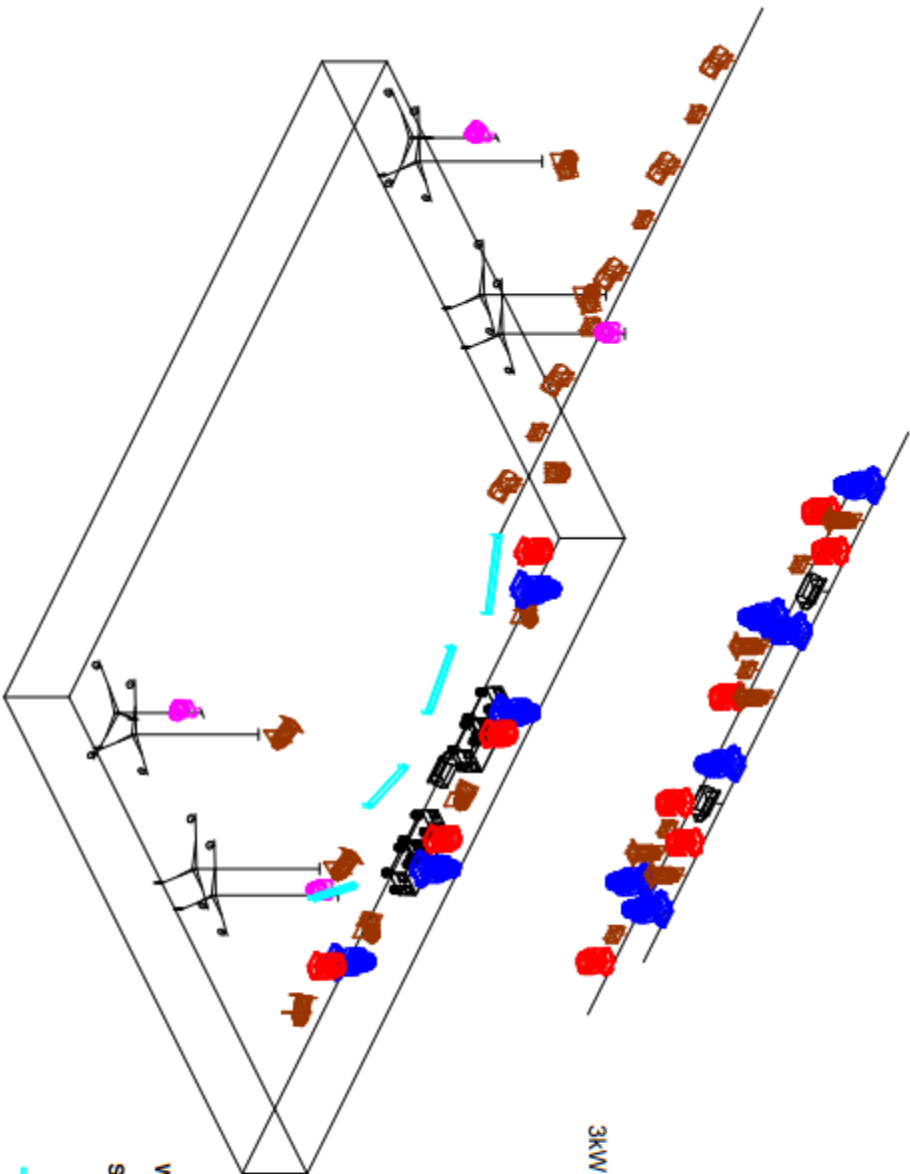
The organizer will provide wedges type DX15, 115xt, PS15R2, MAX15, LE1200,...and 2 speakers on side stands on 2 circuits.

IN	INSTRUMENTS	MICROS	PIEDS	AUTRES
1	KICK	D6	PPP	Compressor/ Gate
2	Tom Basse	E 604		
3	OH Ride	KM 184	GPP	
4	SNARE 1 Top	Sm 57	PPP	Compressor / Gate
5	SNARE 1 Bot	Sm 57	PPP	Compressor / Gate
6	SNARE 2 Top	Sm 57	PPP	Compressor / Gate
7	HH	Sm 81	PPP	
8	OH L	KM 184	GPP	
9	OH R	KM 184	GPP	
10	SOUSAPHONE	HF		Compressor
11	SAX BARYTON	HF		Compressor
12	SAX ALTO	HF		Compressor
13	TROMPETTE	HF		Compressor
14	TROMBONNE	HF		Compressor
15	GUIWARE	SM 57	PPP	
16	VX	SM 58 HF	GPP	Compressor/Gate
17	VX	SM 58 HF	GPP	Compressor/ Gate
18	VX	SM 58 HF	GPP	Compressor/ Gate



FICHE TECHNIQUE LUMIÈRE

Rider Light Oozband V1



We need :



Symbol	Name	Count
	Spot type HPE 700	10
	Wash type K10	10
	Atomic 3000	3
	PAR 64 CP62	14
	FL1300	8
	PC	5

1x Plug 16A Stage Right
1x Plug 16A Stage Left
1x Plug 16A Up Stage
3kW are enough for these 3 Plug

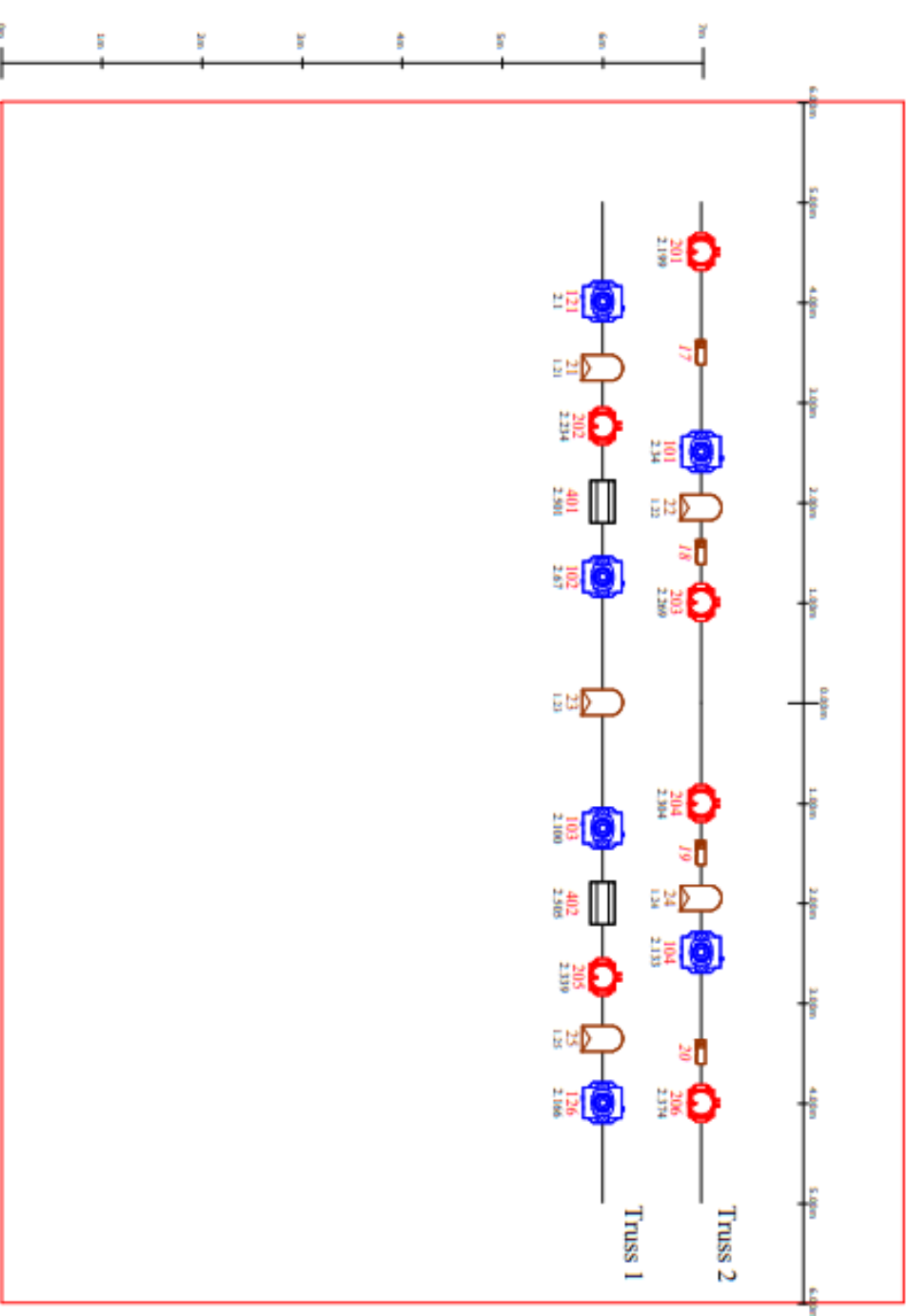
1 univers dmx for our kit at Up
Stage
1 fog machine

1 Ma2 V3.3.4.3

We bring :

Symbol	Name	Count
	Par Leds	4
	Leds Bar	4

TOP TRUSS

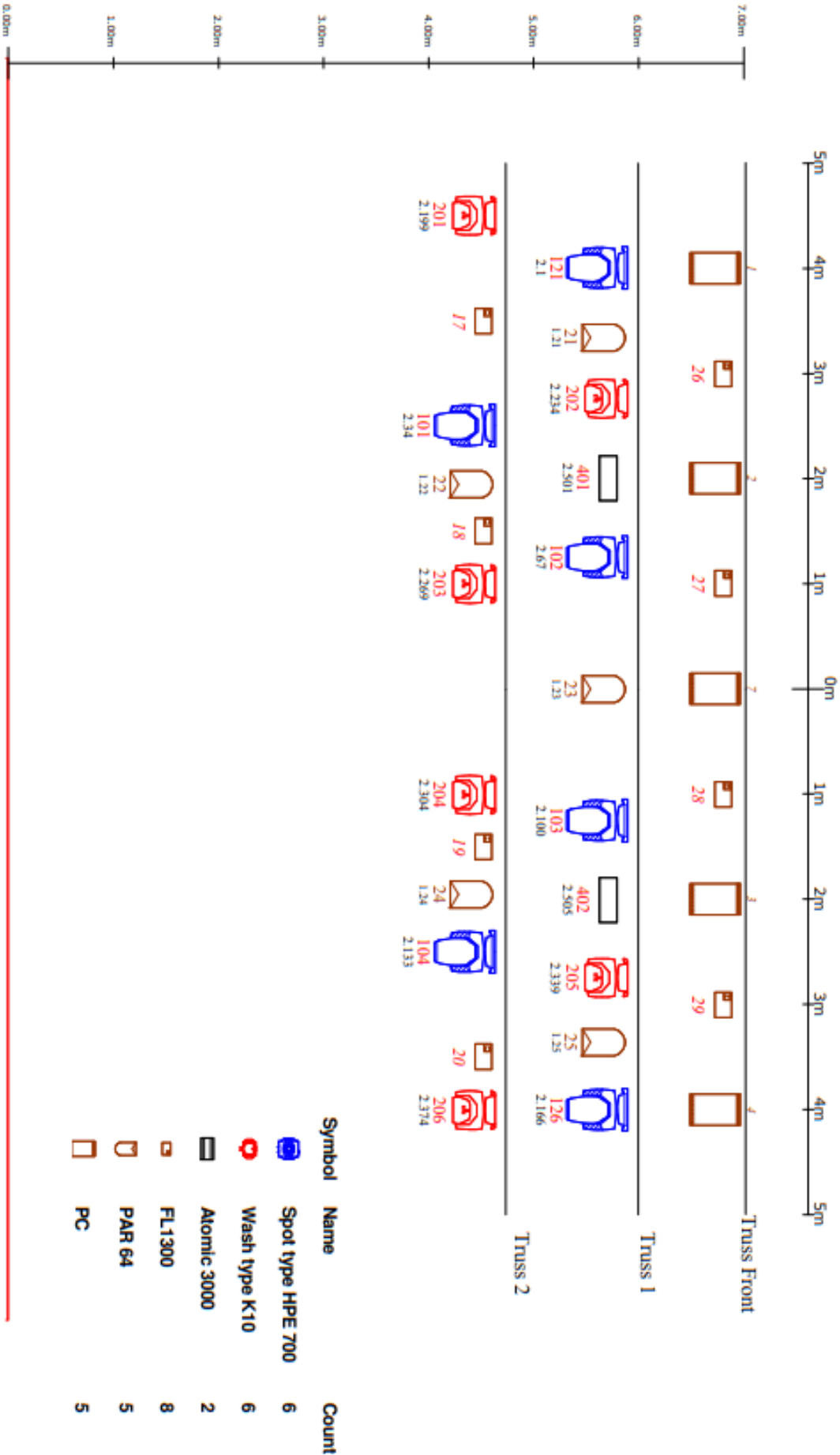


We bring :

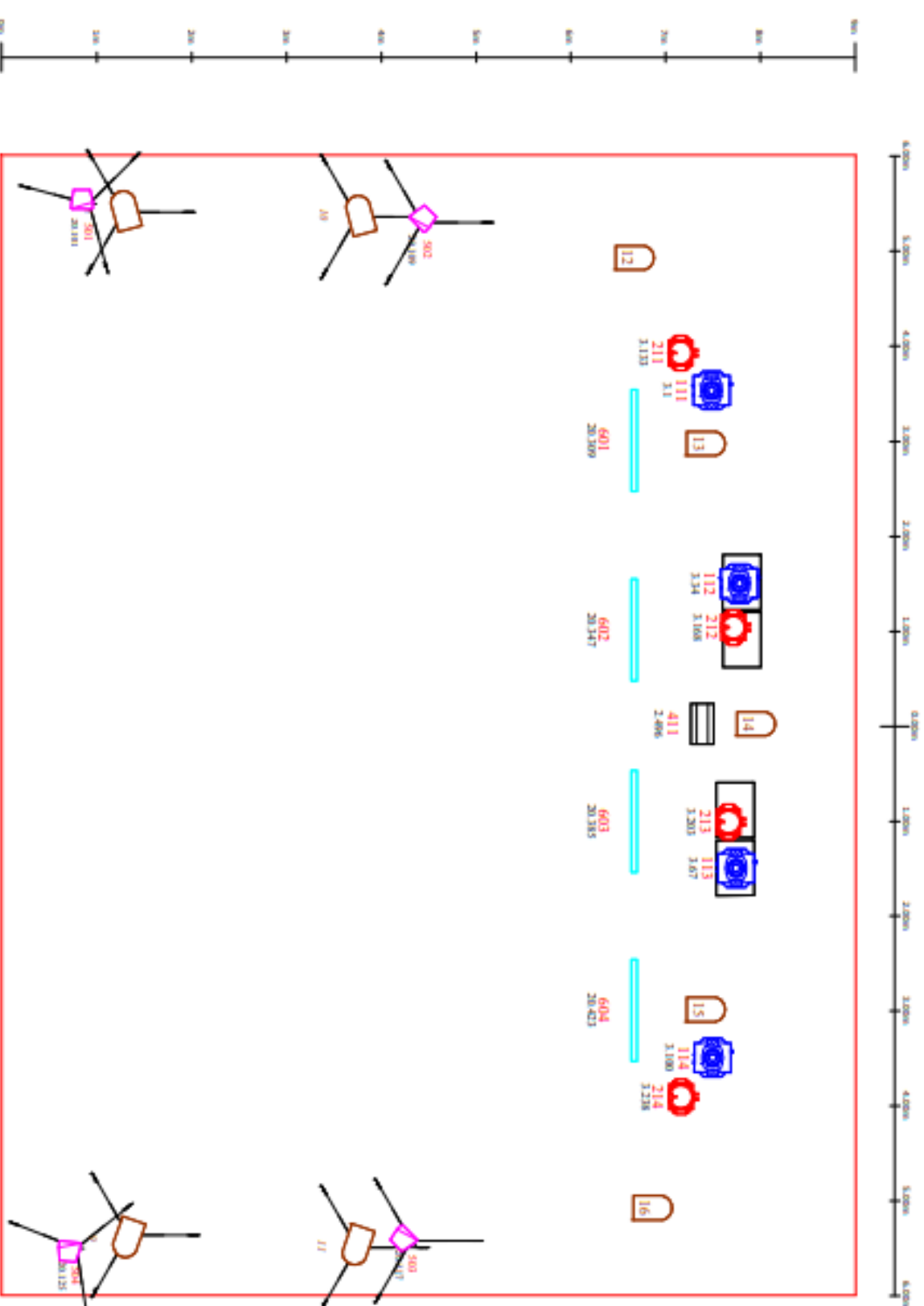
Symbol	Name	Count
	Spot type HPE 700	6
	Wash type K10	6
	Atomic 3000	2
	PAR 64	5
	FL1300	8
	PC	5

Truss Face




FRONT TRUSS





TOP FLOOR



We need :

Symbol	Name	Count
	Spot type HPE 700	4
	Wash type K10	4
	PAR 64 CP62	9

We bring :

Symbol	Name	Count
	Par Led	4
	Leds Bar	4

CONTACTS

Diffusion contact

Maël Morel

06 65 68 25 75 / mmorel@engrenages.eu

Tour contact

Julien Fleury

06 78 21 00 28 / fleury_julien4321@orange.fr

Technical contact

Aurélien Bégo

06 99 34 91 65 / naurel56@gmail.com

www.engrenages.eu